



# Art Program Pre-Proposal Conference

May 22, 2025

# Introductions

## Omaha Airport Authority



**Steve McCoy**, Chief  
Strategy and  
Technology Officer



**Jason Snowden**,  
Chief Commercial  
Officer



**Steph Gaston**,  
Procurement Contact



**Mark Sommer**,  
Program Director

# Agenda

Introductions

Terminal Modernization Program Overview

Future Art Program

OMA Art Program Locations Review

Solicitation Information

Conditions of the Solicitation

Questions

# Supporting the OMA Mission, Vision, & Values

## Mission

To provide **premier customer service** and **airport facilities** through  
**operational excellence**

## Vision

To be the Best Airport in the Midwest

## Values

Cleanliness

Convenience

Customer Service

Efficiency

Employee Development

Operational Excellence

Professionalism

Safety

Security

# Eppley Airfield

Medium-Hub Airport in Omaha, Nebraska

4

Miles from  
Downtown  
Omaha

5.2

Million  
Passengers  
Served in 2024

7

Air Carriers

34

Non-Stop  
Destinations

70

Daily  
Departures



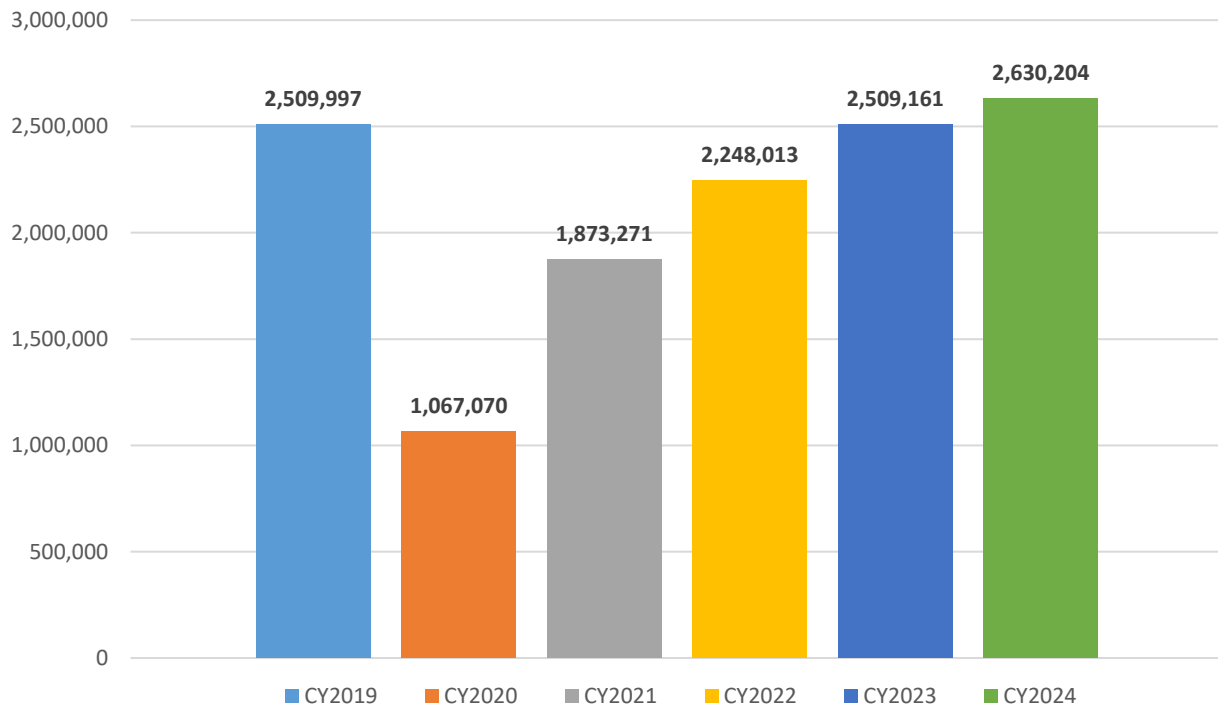
**BUILD** **OMA**

# Market

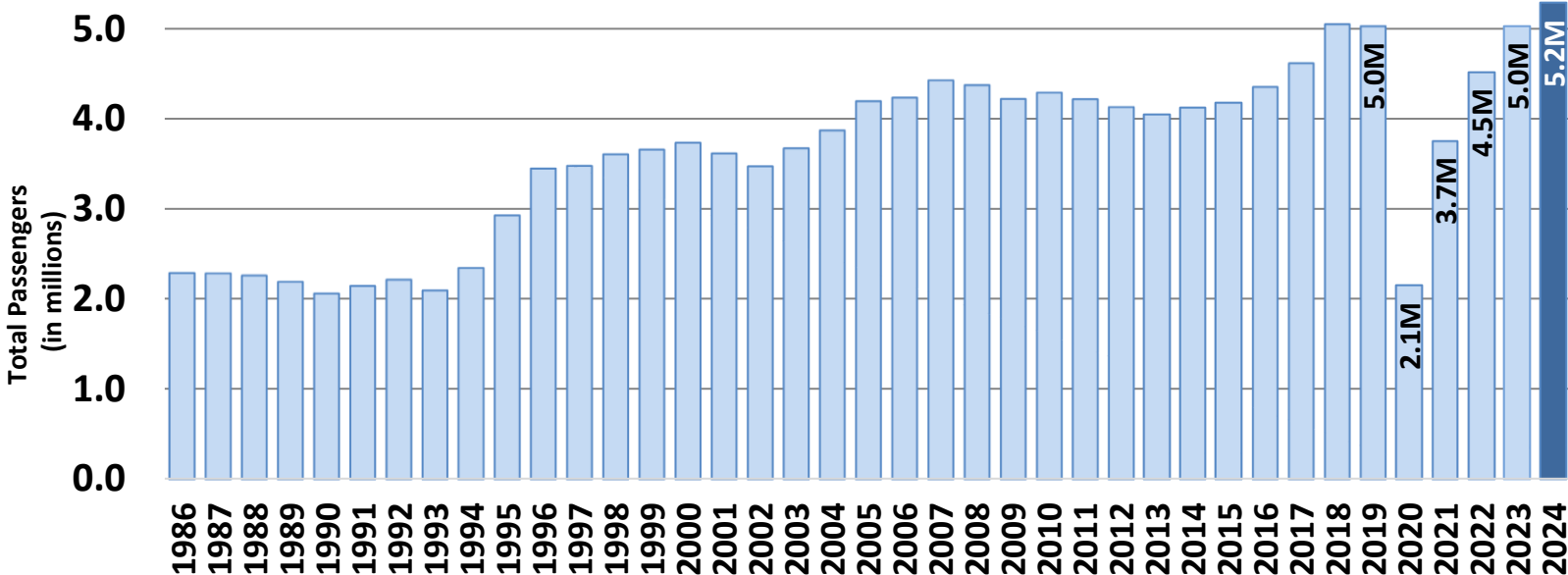
# Omaha-NE-IA Metro Area Market

- **Fortune 500 Headquarters:** Berkshire Hathaway, Union Pacific, Mutual of Omaha, Kiewit Corporation, TDAmeritrade/Charles Schwab
- **Additional Corporate Headquarters:** Valmont Industries, Werner Enterprises, HDR, Green Plains, FNBO, among many others
- **Population:** 984,548 (U.S. Census 2023)
- **Median Household Income** exceeds U.S. average at \$81,376 (U.S. Census 2023)
- **Population Age:** 60% between 18 and 64 years of age; 37 median age (U.S. Census 2023)
- **Universities and Colleges:** University of Nebraska Omaha, Creighton University, Clarkson College, College of St. Mary, Metro Community College, Nebraska Methodist, University of Nebraska Medical Center
- **Key Events:** NCAA Men's College World Series, Pinnacle Bank Golf Championship, Omaha Fashion Week (4<sup>th</sup> largest in US), Berkshire Hathaway Annual Shareholder Meeting

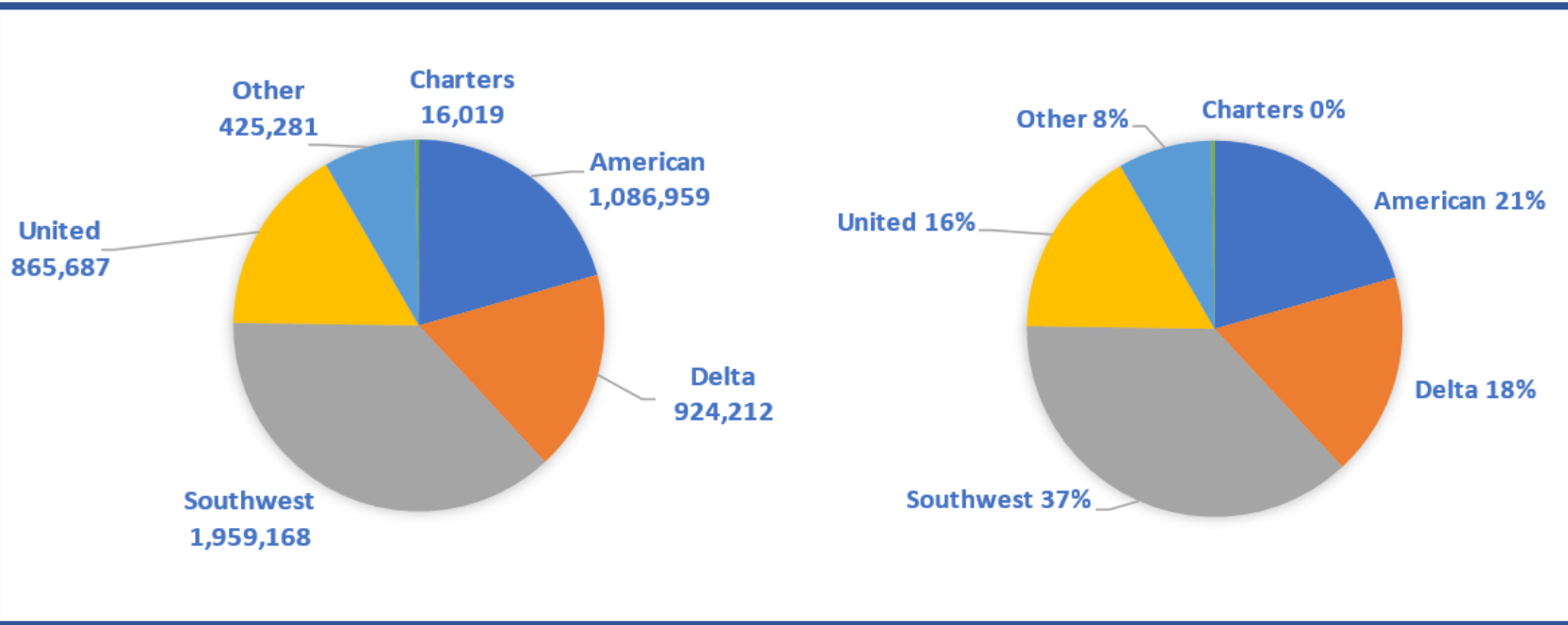
# Eppley Airfield Annual Enplanements



# Eppley Airfield Total Passengers

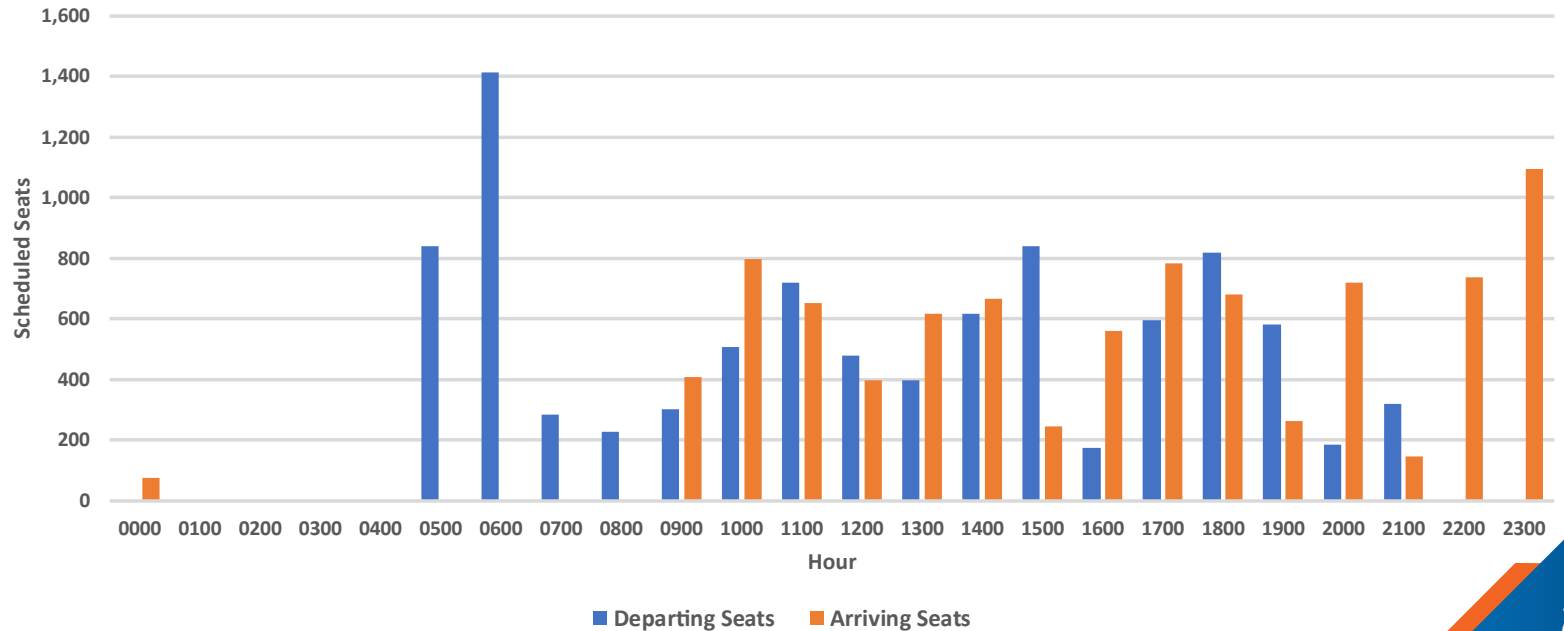


# Airline Market Share



# Airline Seats Per Hour

Arriving/Departing Seats Per Hour  
March 6, 2025



# Terminal Modernization Program (TMP)

## OVERVIEW

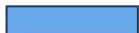

# Eppley Airfield Terminal - Today

- Served over five million passengers in 2024
- Security checkpoint located at entrance to each concourse
- Ten gates per concourse
- Domestic flights only



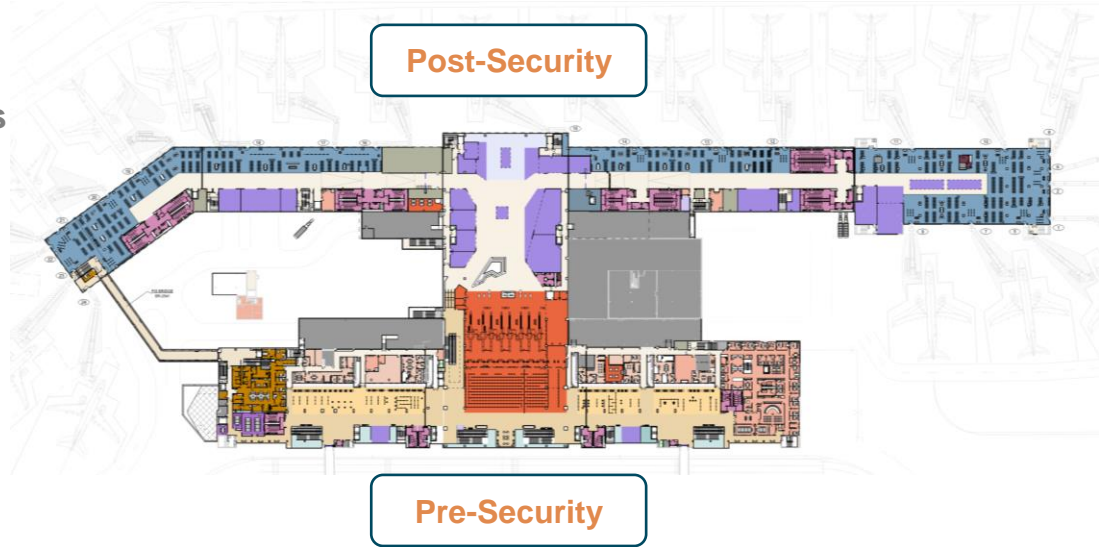
# TMP Overview



-  Terminal Renovation
-  Terminal Expansion

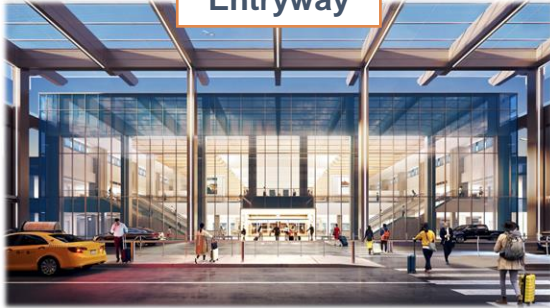
# Future Eppley Airfield Terminal

- TMP Budget: **\$950m**
- Planned to support **over six million total annual passengers**
- One **centralized security** checkpoint
- One contiguous concourse
- 22 gates
- **International flight capability**
- Construction began in 2024



# End-to-End Terminal Modernization

Entryway



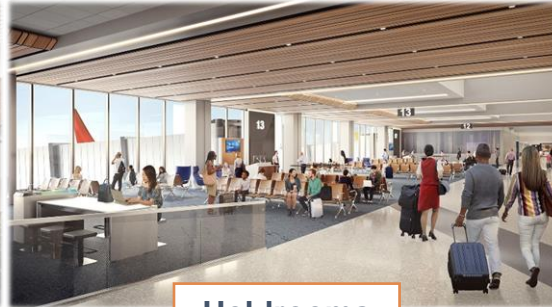
Checkpoint



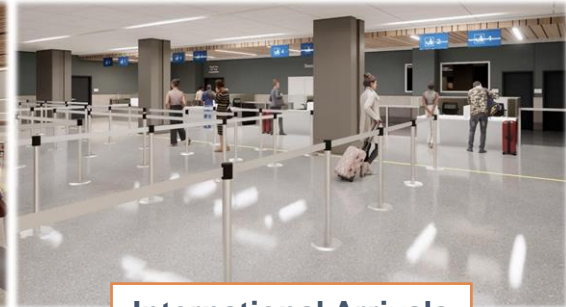
Restrooms



Central Pavilion



Holdrooms



International Arrivals

# TMP Groundbreaking

February 20, 2024



The Omaha Airport Authority celebrated the groundbreaking of the Terminal Modernization Project with the **Authority Board**, the **Omaha Mayor**, the **Nebraska Governor**, **U.S. Senators**, **U.S. Representatives**, and members of the Design and Construction Team.



# TMP Progress

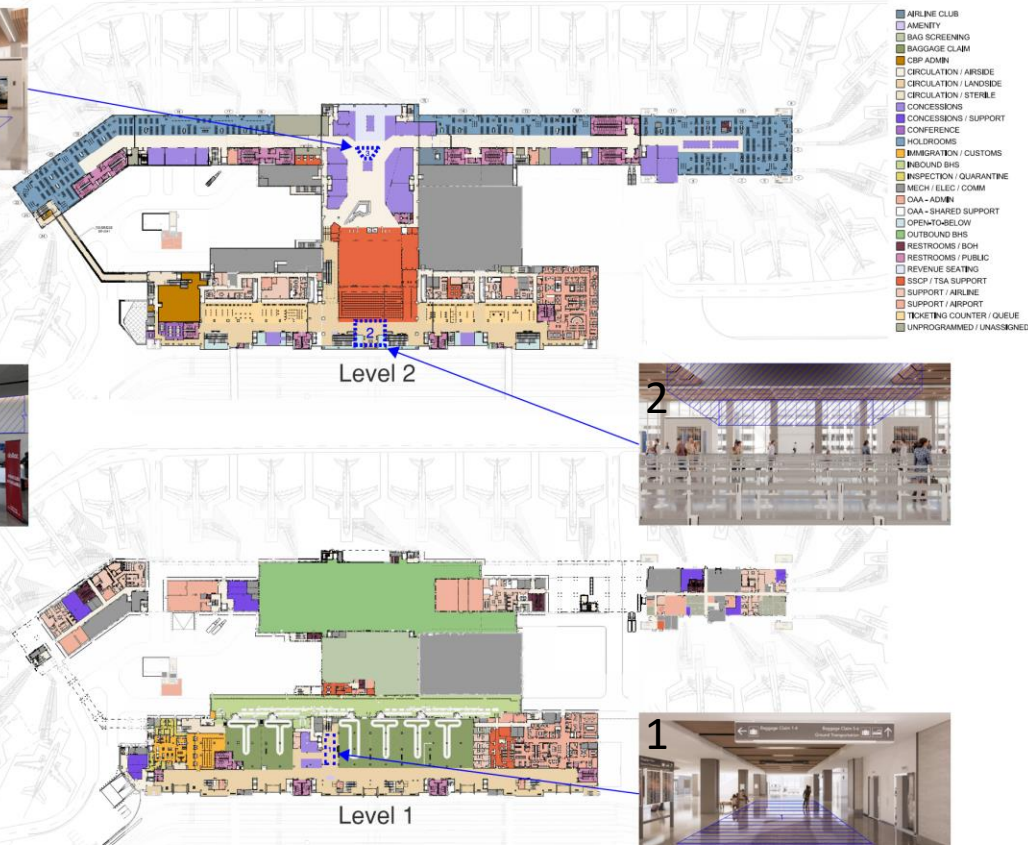


# Future Art Program

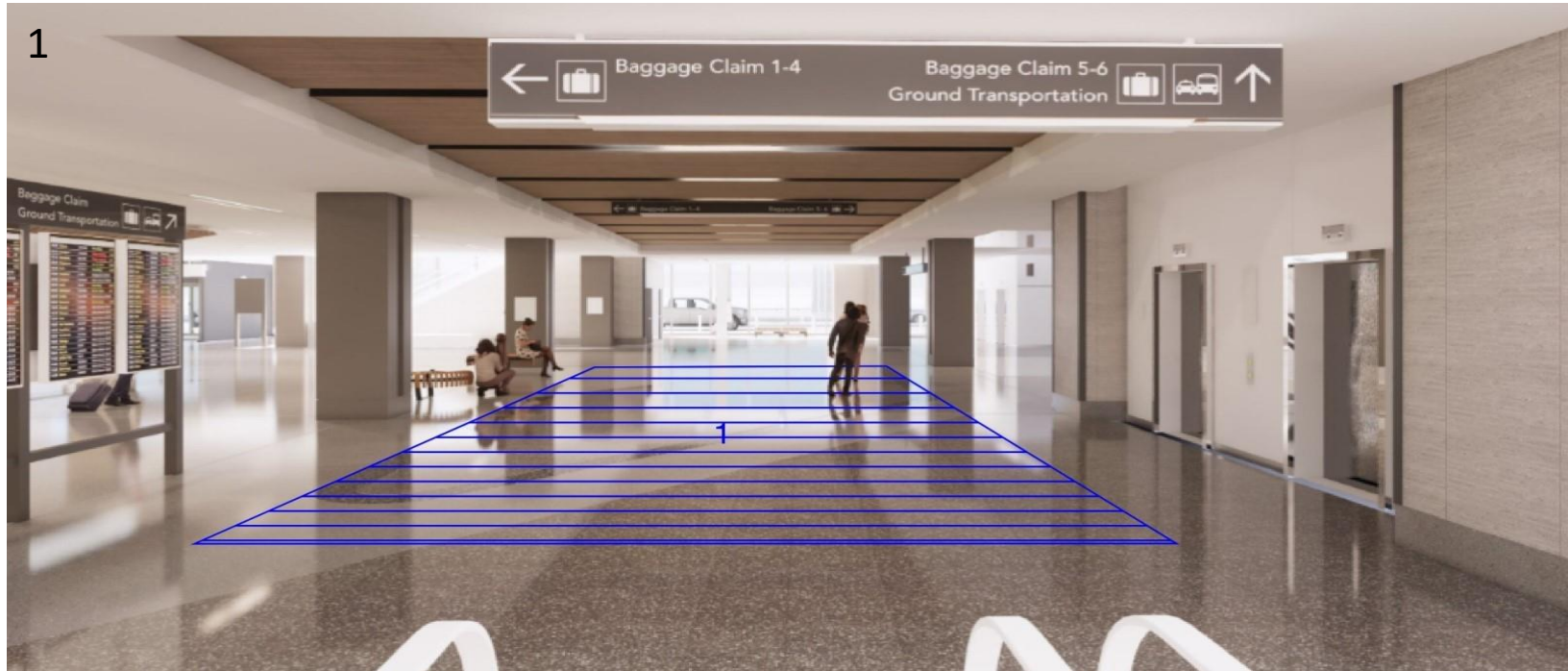
# Art Locations Map



4. BULKHEAD IN CSB

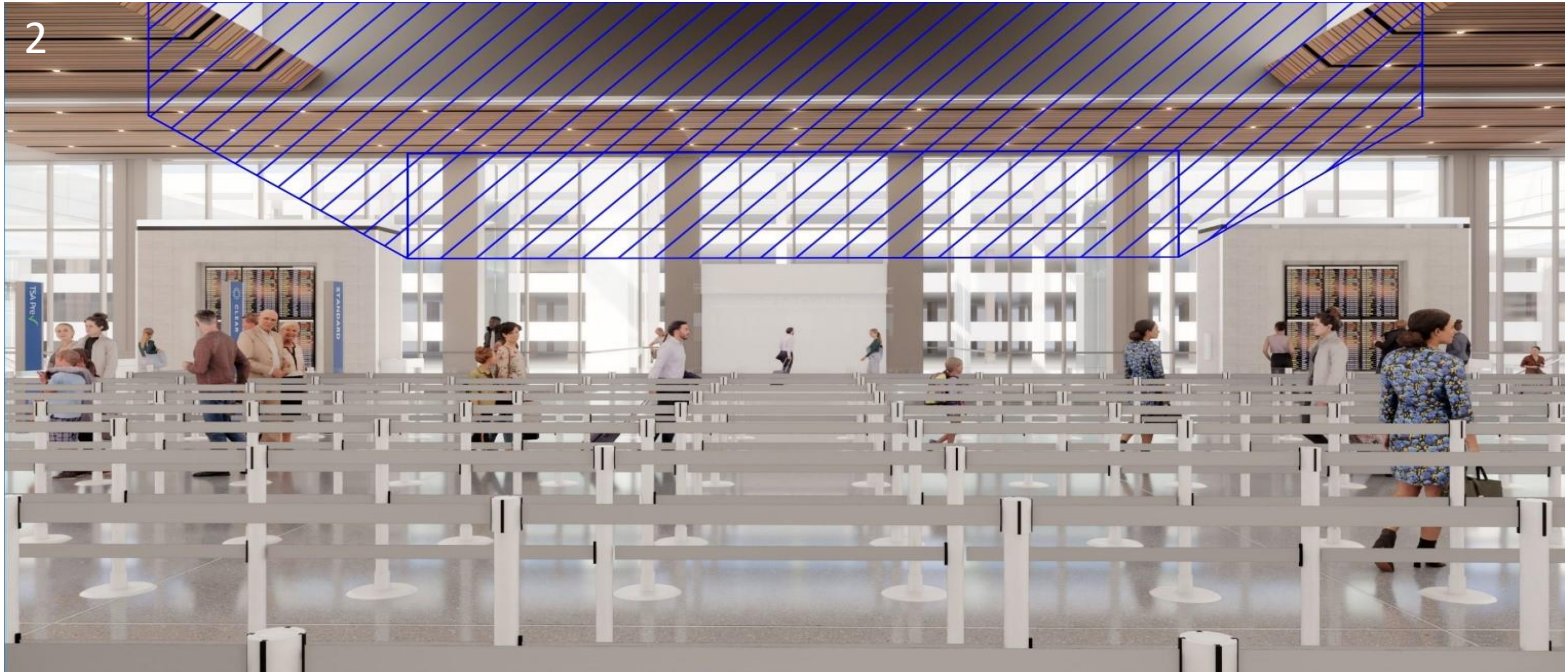


# Future Art Program



Concept	Location	Area	Approximate Sq. Ft.
Walkable Floor Inlay	#1	Pre-Security	936

# Future Art Program



Concept	Location	Area	Approximate Sq. Ft.
3-Dimensional, Hanging, Suspended	#2	Pre-Security	3180

# Future Art Program



Concept	Location	Area	Approximate Sq. Ft.
Floor Inlay and / or Floor Mounted 3-Dimensional	#3	Central Concourse	575

# Future Art Program



Concept	Location	Area	Approximate Sq. Ft.
Wall Applied	#4	Customer Service Building	1424

# Description of Artwork

## Required Criteria

- Apolitical
- Non-religious
- Noncontroversial

## Design Intent

- Modern, Timeless, and Inspiring Design
- Improve the Physical and Psychological Experiences at OMA
- Make OMA's Ambiance and Aesthetic Memorable
- Prioritize Guest Comfort
- Enrich Passengers, Patrons, and Employees Experience.

## Installation Requirements

- Uniform Materials
- Sustainable Practices (Where Applicable)
- No Sharp, Protruding Edges
- Code and ADA Compliant

# Opportunities for Involvement

- Prime Artist
- Joint Venture
- Consultant
- Supplier
- Contractor

**No exclusive local business agreements**

# Solicitation Information

# Solicitation

- Art Program opportunities will be competitively solicited through a **Request for Proposals (RFP) process**
- Omaha Airport Authority **encourages participation from local Artists**
- Contract is not binding until approved by the Authority and executed

# RFP Timeline and Key Dates

**RFP  
Issued**

May 6,  
2025

**Pre-  
Proposal  
Conference**

May 22,  
2025

**RFP  
Question  
Deadline**

May 30,  
2025

**Proposals  
Due**

June 20,  
2025

**Proposer  
Interviews**

June 30 -  
July 1,  
2025

**Notice of  
Intent to  
Award**

July 9,  
2025

**Agreement  
Signed**

July 2025

**Commence  
Art Design**

August 6,  
2025

**Complete  
Installation  
or  
Placement  
of Artwork**

November  
2026\*

A majority of the Art program is projected to open  
between October 2026-March 2027.



\* Tentative date to be refined such that build out and opening are coordinated with the opening of the Terminal Modernization Program Central Pavilion

# Solicitation Protocol

- All correspondence with the Authority, including Proposals in response to the RFP, will become public records under the Nebraska Public Records Act
- The Authority will not disclose any part of any Proposal prior to award recommendation
- Common-use lounge leases are not binding until approved by the Authority and executed by the CEO
- Communication Prohibition
  - Prospective proposers are not to discuss the RFP with any Authority employee, Board member, or anyone associated with an Authority employee or Board member
  - Questions or concerns may only be addressed to the Procurement Contact assigned to this RFP

# Selection Procedure

## Selection Committee

- All Proposals will be reviewed and a selection made by the Selection Committee
- One or more Artists may be invited by the Authority to an in-person interview to discuss their Proposal or to demonstrate the Artists' capabilities.
- The Selection Committee will recommend the award to the Omaha Airport Authority Chief Executive Officer or their designee.
- Each Artist submitting a Proposal will be informed of the results.
- The Selection Committee expressly reserves the right to accept or reject any and all Proposals, to waive irregularities, and to negotiate additional or different terms with the selected Artists.

# Proposal Evaluation

## Selection Criteria:

- Artistic Merit
- Appropriateness
- Work Plan & Technical Approach
- Budget
- Qualifications
- Apolitical, Non-Religious, and Non-Controversial

*The listed evaluation criteria are not of equal value or decision weight*



# Conditions of the Solicitation

# Key Agreement Terms

- Selected Proposer(s) will be responsible for the **design, fabrication, and installation of the Artwork.**
- **The Authority will provide supporting infrastructure elements**, including structural support, wood backing, concrete slab, power / data connection, etc. as required
- All Artwork will be owned by the Omaha Airport Authority together with any and all copyrights.



# Why Eppley Airfield?



## 1 Service

Great opportunity to serve the traveling public

## 2 Market

Strong corporate, health, and education market

## 3 Environment

Showcase Artwork in a vibrant and dynamic environment

**Become part of the OMA Community!**

# Questions?

Thank you for participating!

For additional information or questions, email:  
[Art@FlyOMA.com](mailto:Art@FlyOMA.com)